

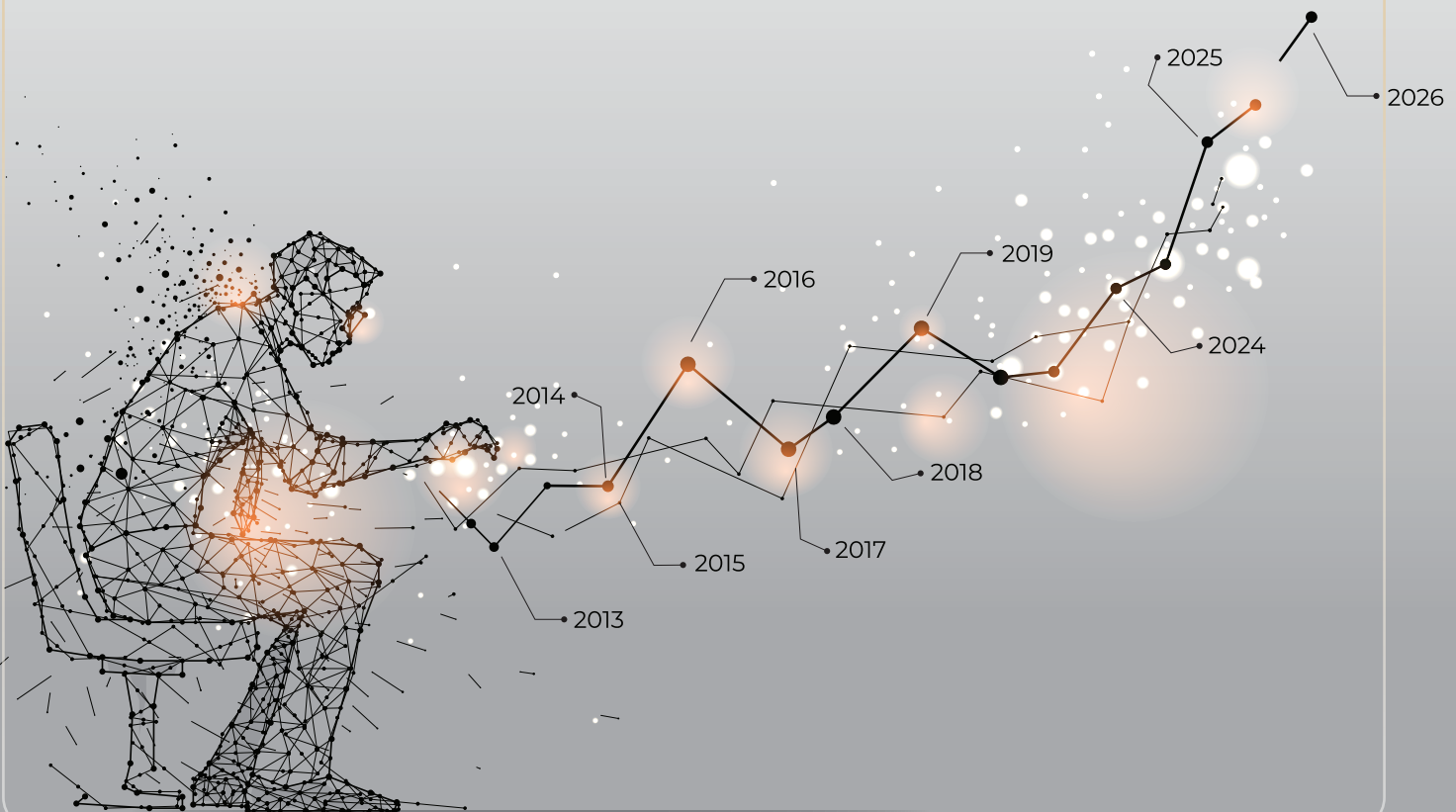


IN PARTNERSHIP WITH



Stanbic Bank

BOTSWANA STOCK EXCHANGE STANBIC BANK SENIOR SECONDARY SCHOOLS FINANCE AND INVESTMENT COMPETITION 2026 RULES



Background

The Botswana Stock Exchange (BSE) has been hosting the Senior Secondary Schools Finance & Investment Competitions facilitated annually since 2013 amongst the student community. The initiative was introduced to equip students with essential financial management skills and cultivate a culture of investing from an early age. Previously, the competition was held in person through a hackathon format. To enhance the experience, in 2024, the BSE partnered with Stanbic Bank Botswana and transitioned the competition to a technology-driven platform, the Stock Market Simulator. The platform provides a virtual trading environment where participants learn about stock selection, monitor portfolio performance, and practice buying and selling of BSE-listed securities in a financial risk-free environment.

This year marks the third Annual Senior Secondary Schools Finance and Investment Competition to be hosted on the Stock Market Simulator platform.

Competition Structure

Invitation letters to participate sent to all Senior Secondary Schools across Botswana. The objective is to ensure broad national representation and provide equal opportunity for schools across all regions to take part.

All participating schools will start competing at Regional Level, where students will trade virtually on the Stock Market Simulator platform. Teams will actively manage their virtual portfolios by buying and selling BSE-listed securities within a risk-free, simulated trading environment. Performance will be evaluated based on portfolio value at the close of the final trading day. The top 3 schools with the highest portfolio value in each region will be declared the Regional Winners and awarded share vouchers.

Position 1 school from each region, will then advance to the National Level of the competition. At this stage, teams will compete in a hackathon-based format competition designed to further test their analytical skills, teamwork, and understanding of financial markets. The National round will ultimately determine the overall winning school.

BOTSWANA STOCK EXCHANGE STANBIC BANK SENIOR SECONDARY SCHOOLS FINANCE AND INVESTMENT COMPETITION 2026: REGIONAL LEVEL

Rules for the Competition:

1. Registration

- Registration will commence on the **06th May 2026 to 22nd May 2026**.
- Enrollment for each participating school should be facilitated by an appointed teacher.
- To register for the competition, create an account, by visiting the BSE website at www.bse.co.bw. Click on Stock Market Simulator tab >> Click on log in tab >> click on create new account, the following tab will appear.

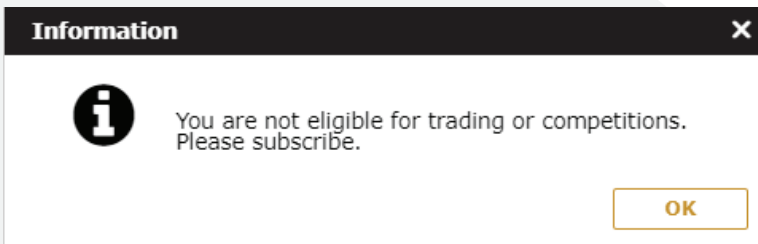
The screenshot shows a web browser window with the title 'Online Account Opening'. The browser's address bar is empty. The page has a navigation bar with three tabs: 'Terms and Conditions', 'Customer Verification', and 'One Time Password'. The 'Customer Verification' tab is highlighted in orange. Below the navigation bar is a form with two columns of fields. The left column contains: First Name (text input), ID Type (dropdown menu with 'Please Select'), Gender (dropdown menu with 'Please Select'), Mobile No (text input), Nationality (dropdown menu with 'Please Select'), and Country of Residence (dropdown menu with 'Please Select'). The right column contains: Surname (text input), ID Number (text input), Date of Birth (text input), Email Address (text input), and Customer Category (dropdown menu with 'Please Select'). At the bottom right of the form are two buttons: 'Back' and 'Next'.

Figure 1: Online Account opening tab

The online Account Opening tab in figure 1 above should be completed as follows:

- Name: School name
- Surname: Senior Secondary School/ International/ Private School
- Customer Category: Select Student
- All other details such as ID type, gender, mobile number, nationality, country of residence, ID number, email address should be of the appointed teacher who will act as a point of contact for the school.

- Fill in all details, submit >> enter OTP and submit.
- New log in credentials will be sent to registered email.
- An account can only be created on the Stock Market Simulator web application on the BSE website. The feature is not available for mobile application.
- When you log into the platform for the first time a subscription pop up message will appear as shown below:



- Click OK and log out.
- Log in for the second time after 4 hours, subscription fees for your account will be waived off and your account will be eligible for trading.
- To enroll for competitions log into the Stock Market Simulator using credentials obtained when creating an account. Navigate to header, click on competition >> select educational institute >> enroll >> submit.
- If you already have an account from the previous years, log into the Stock Market Simulator, navigate to header, click on competition >> select educational institute >> enroll >> submit.
- After successful enrollment, each participating school should complete the attached **registration form** and send it to **marketdev@bse.co.bw**.
- BSE will waive-off subscription fees for all enrolled schools.

2. Competition Timeline

The competition will run for a period of four (4) weeks. Timelines are as follows:

Description	Dates
Registration open date	06 th May 2026
Registration end date	22 nd May 2026
Orientation date	25 th May 2026
Competition start date	26 th May 2026
Competition end date	19 th June 2026
Winner announcement date	22 nd June 2026
Awarding of Schools (No physical awards ceremony)	25 th June 2026

3. General Competition Guidelines

- Only Senior Secondary School students are eligible to participate.
- Each team should have 5 participating students.
- The Regional Competition will be divided as follows: North, East, South and West Region.

NORTH (All School in North, North East, Central Region)	EAST (All School in South East Region)	WEST (All Schools in North West Region)	SOUTH (All Schools in Kgatleng, Kweneng, South Region)
Lethakane	Gaborone	Gantsi	Molefi
Lotsane	Ledumang	Matsha	Kgari Sechele II
Madiba	Naledi	Tsabong Unified	Mogoditshane
McConnell	St. Joseph's	Maun	Mahupu Unified
Moeng	Kagiso	Shakawe	Seepapitso
Shashe River	Moeding	Delta Waters	Moshupa
Shoshong	Al Nur Unified	Kagisano	Goodhope
Swaneng	Bosele Secondary School	Pioneer Academy	Lobatse
Matshekge Hill	Botlhale Secondary	Tsau	Believers Destiny College
Mmadinare	Capital Cont. Classes	Matshwane College	Blue Bows Secondary
Selibe - Phikwe	Gaborone International		Crescent
Nata	Green Hectares Unified		Forest Hill
Francistown	Livingstone Kolobeng		Gabane Private
Mater Spei	Legae Academy		Kanye Private
Masunga	Lekhubu		Kanye Brigades
Botswana D. Ed. Coll.	Maruapula		Kweneng International
Clifton Secondary	Oriel		Kweneng RDT
Corpus Christi	Rainbow		Maranatha

Day Star	Regent Hill		Phaphamang
Eastern Gate Academy	St. Bernadette		Raserura
Flamingo	Terence		Regent Hill Secondary School- Molepolole
Jacaranda Secondary	The Learning Centre		Fairview Grace Academy- Kanye
John Mackenzie	YWCA		The Dow Academy
Mahalapye Dev. Trust	Westwood		
Mophato Secondary			
Morula			
Orapa Private			
Royal Secondary			
Shoshong VDC			
St.Kizito Secondary			
Tabitha			
Golden Eagle International School			
Kopano High School			
Valley Academy Secondary School			

Note: If your School does not appear on the list, please contact the BSE for assistance.

- The winners will be identified from each region, and will proceed to participate in the national competition
- Only 1 team per School can participate in the competition
- A **user manual** is uploaded on the BSE website under the Stock Market Simulator tab to assist with navigating the platform.
- Team members use one (1) trading account to place trades.
- Participants should ensure that the portfolio selected is competition portfolio when placing orders. The competition portfolio is displayed as follows:

COMP-T59-DFNBSE

- Participating schools are not allowed to change their appointed teacher or participants without notifying the BSE.
- Five (5) days after the competition end date all participating schools are required to submit a report, **not exceeding three (3) pages** detailing their experiences and challenges.
- Participating teams will be allocated P100,000.00 virtual funds to build their portfolios.
- The Stock Market Simulator platform has a daily leaderboard that will display ranking of each participating school based on Average Gain/Loss.
- Participants will be able to view daily portfolio summaries, order details and transaction history on their trading accounts.
- Each week the BSE and Stanbic will share a weekly Leaderboard across all Social media pages displaying top 3 participating schools with the highest portfolio for each region.
- On **the 25th May,2026** the BSE will host a session on Microsoft teams to orientate participating schools on the Stock Market Simulator.
- The market trading hours are as follows:

Market Status	Time
Pre-Open	1000hrs-1025hrs
Open	1025hrs-1350hrs
Pre-Close	1350hrs-1400hrs
Close	1400hrs

4. Judging and Evaluation

- Top three (3) schools from each region will be selected based on Average Gain/ Loss at the end of the final trading day. The top 3 winners for each region from the regional competition will proceed to compete in the National Level.

5. Awards and Prizes

At the end of the regional competition top three (3) schools will be awarded as follows:

Positions	Participating Students
1 st Place	P2,000.00 investment voucher per student
2 nd Place	P1,500.00 investment voucher per student
3 rd Place	P1,000.00 investment voucher per student

BOTSWANA STOCK EXCHANGE STANBIC BANK SENIOR SECONDARY SCHOOLS FINANCE AND INVESTMENT COMPETITION 2026: NATIONAL LEVEL

General Guidelines

- Only Position 1 winners from the Regional Level Competition will participate in the National Level Competition.
- The competition will be hosted physically in Gaborone on the 02nd July 2026, at a venue to be communicated. (1-day event)
- The competition will be in a hackathon format, that includes live Q&A session, case study scenarios etc.

Prizes

The school with the highest points at the end of the competition will be declared winner of the Botswana Stock Exchange Stanbic Bank National Finance and Investment Competition 2026. The top 3 winners will be awarded as follows:

Positions	Participating Students	Schools
1 st Place	P2,500.00 investment voucher per student	P15,000.00 cash prize
2 nd Place	P2,000.00 investment voucher per student	P10,000.00 cash prize
3 rd Place	P1,500.00 investment voucher per student	P5,000.00 cash prize

6.Disclaimer

The BSE accepts no liability for any damage, loss, injury or disappointment suffered by any schools as a result of participating in the competition or selected for a prize. The Exchange reserves the right, at any time and without prior notice:

- To amend the competition rules.
- Not to award the prizes.
- To cancel the competition.

The BSE decision on competition winners shall be final.

For any enquiries on the competition contact Market Development Department at marketdev@bse.co.bw.



IN PARTNERSHIP WITH



Stanbic Bank

BOTSWANA STOCK EXCHANGE STANBIC BANK SENIOR SECONDARY SCHOOLS FINANCE AND INVESTMENT COMPETITION 2026: REGISTRATION FORM

Name of School:

Postal Address:

Region (North, South, West, East):

Telephone:

Email:

Name of Teacher in charge & contact details:

Participants' details:

Student Name:	Age:
1.	1.
2.	2.
3.	3.
4.	4.
5.	5.

Agreement:

We confirm that all information provided is accurate and agree to comply with the competition rules.

School Principal's Name:

School Principal's Signature:

Date:

School Stamp: